

# E01

**Gabriel**

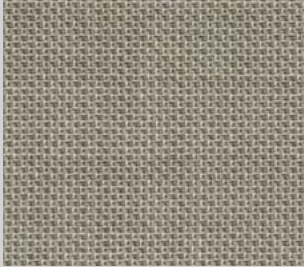
**Fabric**

85% New Zealand wool - 15% polyamide

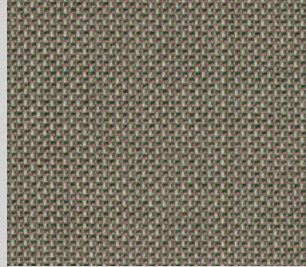
Martindale: 200.000 cycles

Reaction to fire: EN 1021 Part 1-2 (UE), M1 (FR), BS 5852 Crib 5 (UK),  
TB 117:2013 (USA)

OEKO-TEX®  
CONFIDENCE IN TEXTILES  
STANDARD 100



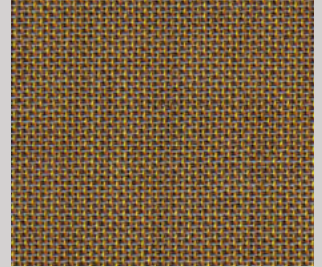
E01/417



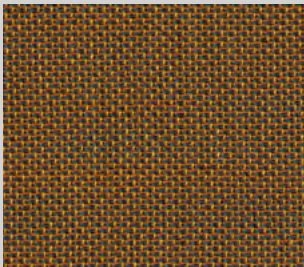
E01/427



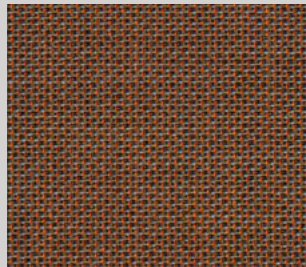
E01/418



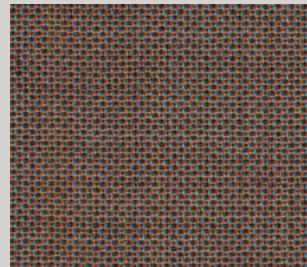
E01/419



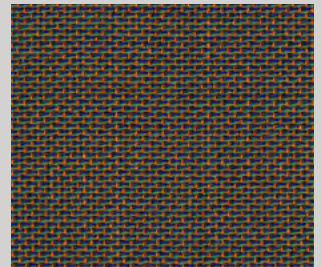
E01/422



E01/424



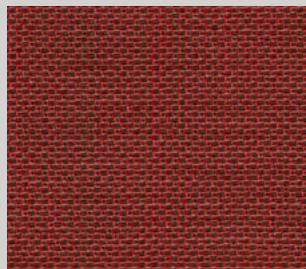
E01/428



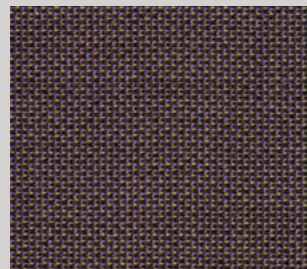
E01/435



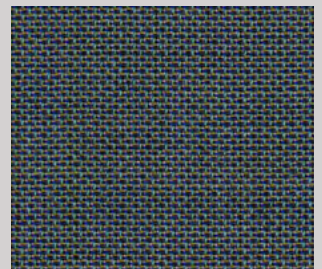
E01/425



E01/423



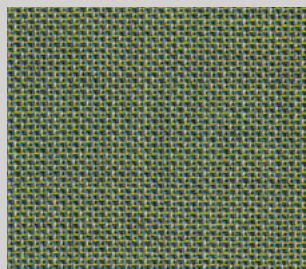
E01/426



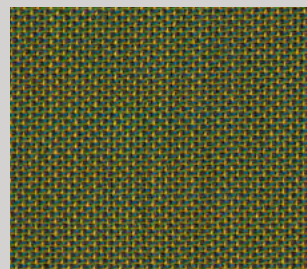
E01/429



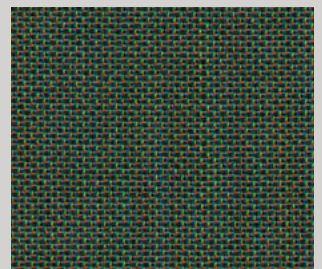
E01/430



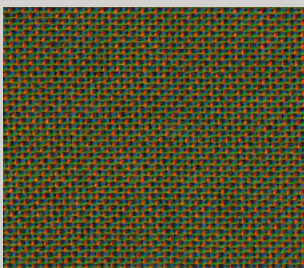
E01/431



E01/432



E01/433



E01/434



E01/421



E01/420

Slight differences between colour batches have to be considered normal

# E02

**Gabriel®**

**Fabric**

85% New Zealand wool - 15% polyamide

Martindale: 200.000 cycles

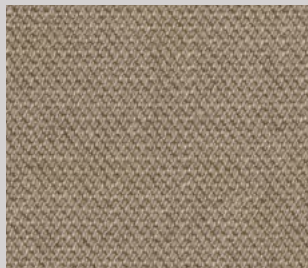
Reaction to fire: EN 1021 Part 1-2 (UE), M1 (FR), BS 5852 part 1 (UK),

Classe 1 (IT), TB 117:2013 (USA)

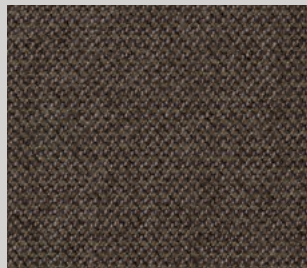
OEKO-TEX®  
CONFIDENCE IN TEXTILES  
STANDARD 100



E02/438



E02/439



E02/440



E02/441



E02/454



E02/453



E02/442



E02/443



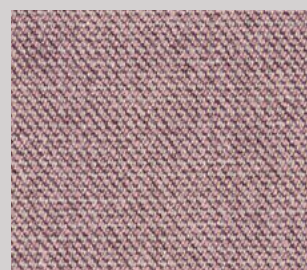
E02/444



E02/445



E02/446



E02/447



E02/448



E02/449



E02/450



E02/451



E02/452



E02/436



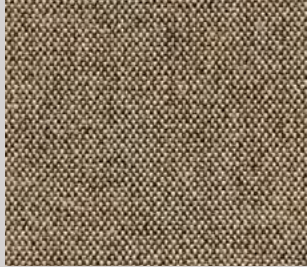
E02/437

The thread design, the process of waving warp and weft different colored natural fiber yarns might cause localized irregularities that make up the natural appearance of the fabric. Slight differences between colour batches have to be considered normal.

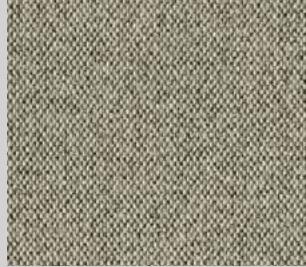
# E03

camira

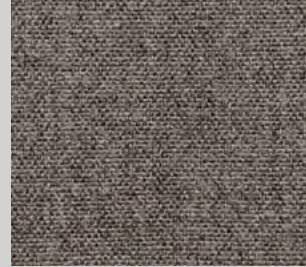
**Fabric**  
75% pure new wool - 25% flax  
Wyzenbeek: >100.000 double rubs  
Reaction to fire: BS 7176 Low Hazard (UK), TB 117:2013 (USA)



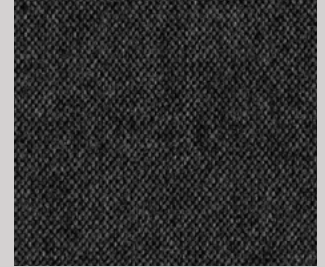
E03/464



E03/460



E03/463



E03/472



E03/470



E03/458



E03/455



E03/462



E03/459



E03/457



E03/456



E03/461



E03/466



E03/471



E03/474



E03/469



E03/468



E03/473



E03/467



E03/465

Slight differences between colour batches have to be considered normal

# E04

abitex

**Fabric**  
100% polyester  
Martindale: 150.000 cycles  
Reaction to fire: EN 1021 Part 1-2 (UE), M1 (FR), BS 5852 Crib 5 (UK),  
Classe 1 (IT), TB 117:2013 (USA)



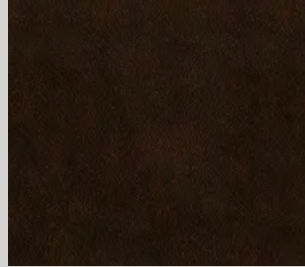
Suggested for Design Living collection



E04/475



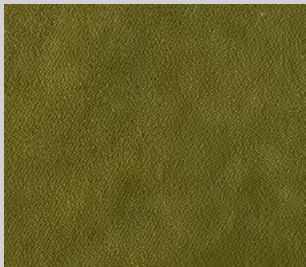
E04/480



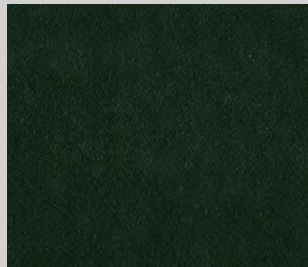
E04/477



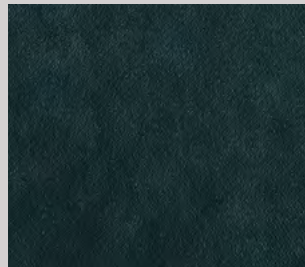
E04/476



E04/481



E04/482



E04/483



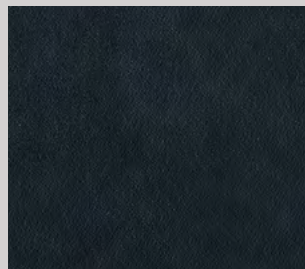
E04/492



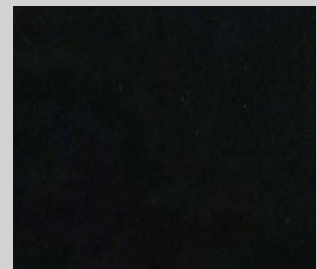
E04/491



E04/484



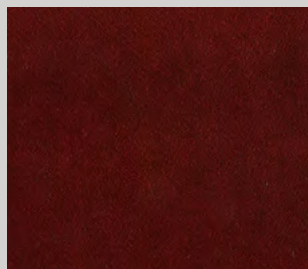
E04/487



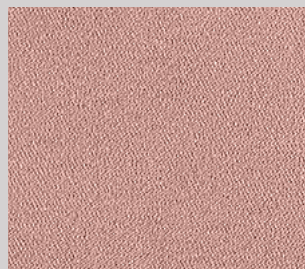
E04/485



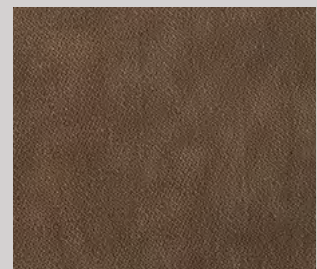
E04/478



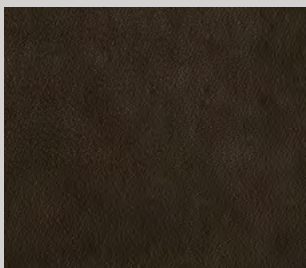
E04/479



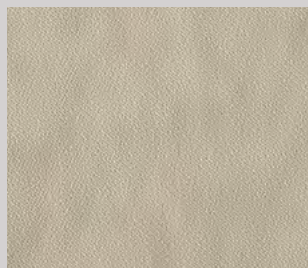
E04/488



E04/489



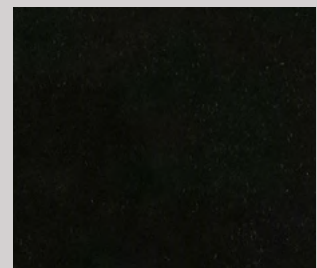
E04/486



E04/490



E04/493



E04/494

Black

Slight differences between colour batches have to be considered normal